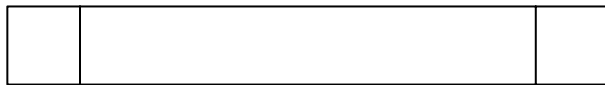


SUPERPRO/Z

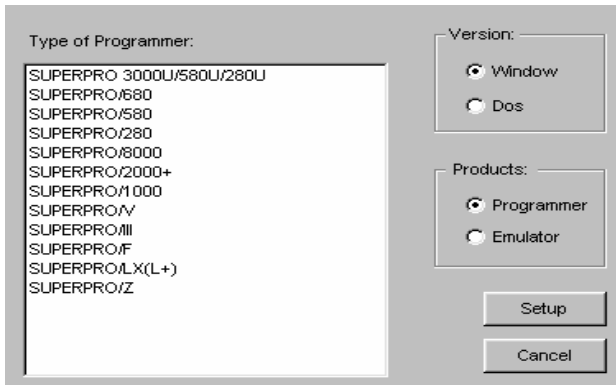


1. SUPERPRO-Z 가  
 가  
 DOS & WINDOWS(WIN98,ME,2000,XP)  
 1,500 가

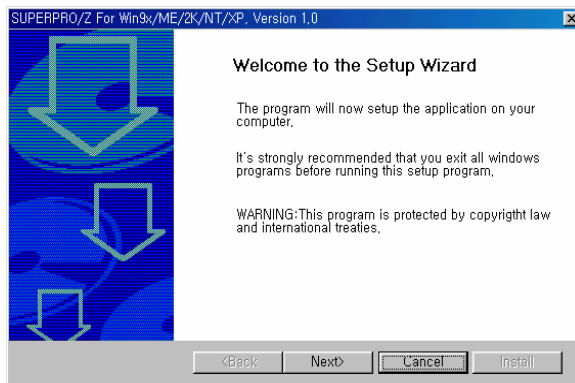
- 2.
- 가 가
  - Auto find device
  - MSDOS, WIN 98, ME, WIN2000, XP OS
  - GUI Mouse
  - EDIT JEDEC.HEX, MOTOROLA S RECODE

3.

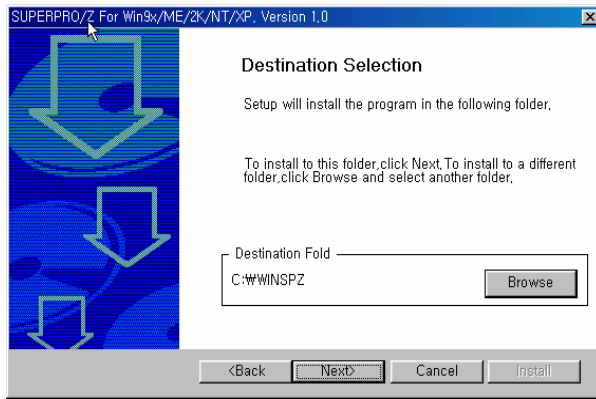
3-1 CD CD-ROM  
 CD SUPERPRO Series  
 Version Products  
 "SUPERPRO/Z" CD



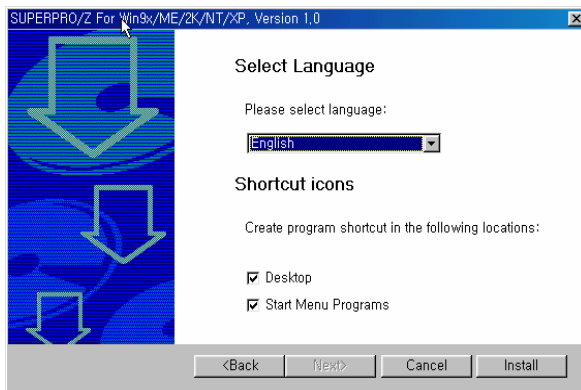
가 SETUP



NEXT



Browse



Language

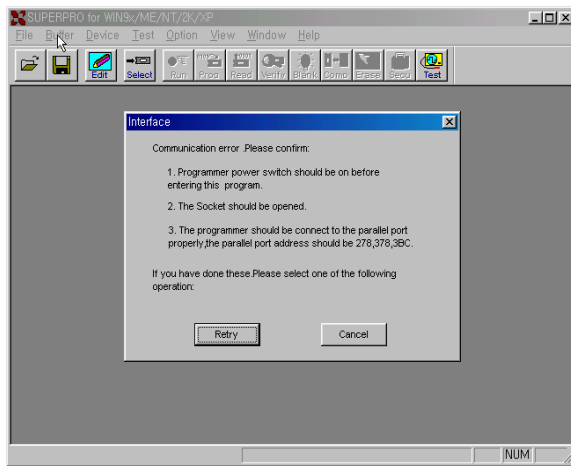
INSTALL



가

가  
"SUPERPRO/Z"

SUPERPRO/Z 가



1. SUPERPRO-Z 가?
2. SUPERPRO-Z ROM 가 가?
3. 가?
4. 가?  
ERROR가

4.

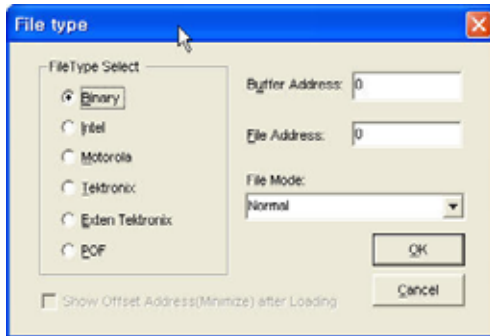


4-1 icon

- Load file



File Data PC  
 ROM file Binary Hex file 가 가  
 Buffer Address 0 file Address 0



-Save file

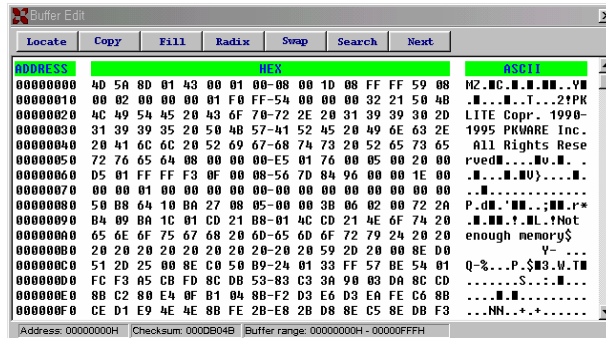


Device Data  
 Binary

-EDIT



buffer



-EDIT

-Locat

가 Address 가 .

- COPY

copy buffer start end  
Start Address End Address Copy to buffer

- Fill

fill data 가 .

- Radix

Hex(16 )/ DEC(10 ) Address

- Swap

2 4 8 .

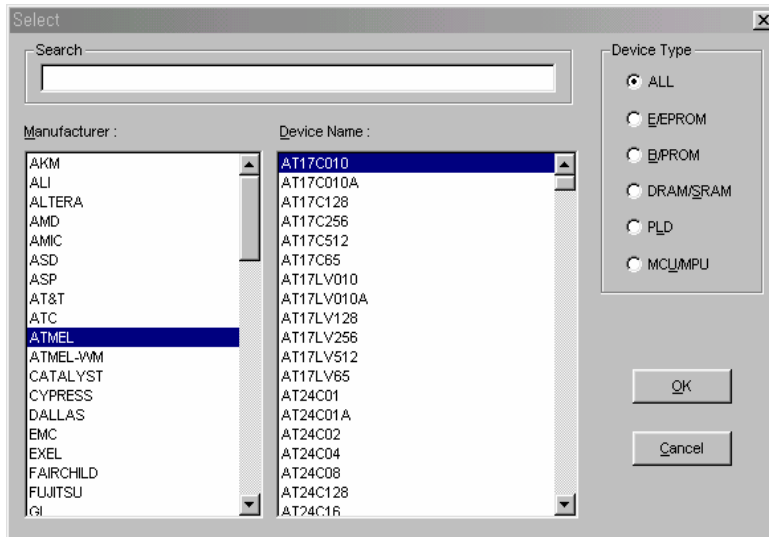
- Search

Hex or ASCII

-Select



search box Device Auto Device  
IC Device List Device Type.



Ex- Search 27040 27040 Device List  
Device Device Type ALL  
Device

-RUN



Copy  
Auto RUN

Device가

Aoto RUN

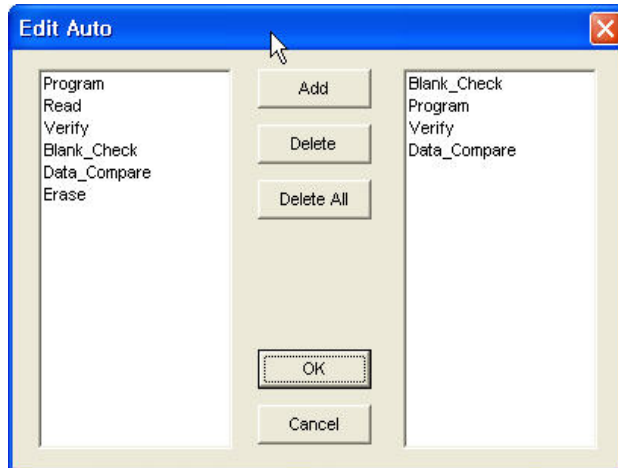
"Edit Auto"  
Copy

1. Program + Verify

2. Blank Check + Program + Verify + Data\_Compare

Edit Auto

Device



- PROGRAM



PC Buffer  
Copy

- READ



Buffer

- VERIFY



Copy 가

-Blank\_Check



가

-Data\_Compare



Buffer

-Eraser



Device Eraser

Flash Type

- SECURITY

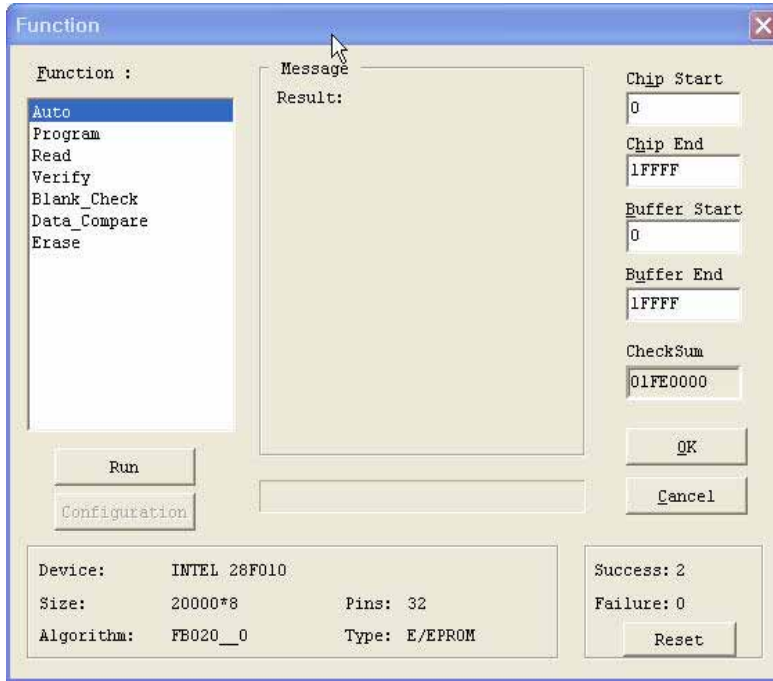
가

security  
Security

PLD or MPU/MCU

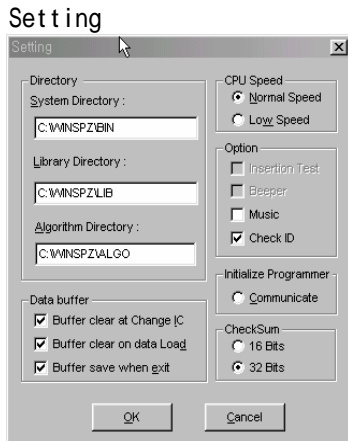
- TEST

Logic IC  
SUPERPRO-Z 74/45 , 4000/4500, TTL / CMOS Logic  
Device



Auto, Program, Read, Verify, Bank\_Check, Data\_Compare  
"RUN"

-OPTION



가  
Setting

Directory: System file, Library file, Algorithm file  
Data Buffer: Buffer Clear  
CPU Speed: PC Normal Low Speed  
Option: 가 Music Check ID  
Intialize: PC 가  
Check\_SUM: Check SUM 16Bit 32Bit



-Device

- Word Format

8bit

가 16bit

Even word 16bit data even address data 8bit program .

Odd word 16bit data Odd address data 8bit program .

32bit data 16bit 가 .

Double word 32bit data 4 8bit data Program .

-OPTION

-AutoIncrement



Format

Binary, ASCII Hex, ASCII Decimal, User Define

가

Enable AutoIncrement

Information



Device

Check SUM

가